

CNY Dirt

BUILD. RIDE. MAINTAIN.

CNY-DIRT is proposing to establish a 15-20 mile singletrack mountain bike trail system throughout Green Lakes State Park, with specific focus on development of new singletrack trail on the newly acquired Mann Property. This trail system will be designed, built and maintained with 100% volunteer labor. Sustainable trail construction methods will be utilized as detailed in this document, and will be consistent with the guidelines established by NYSDEC for development of mountain bike trails within the Adirondack Park.



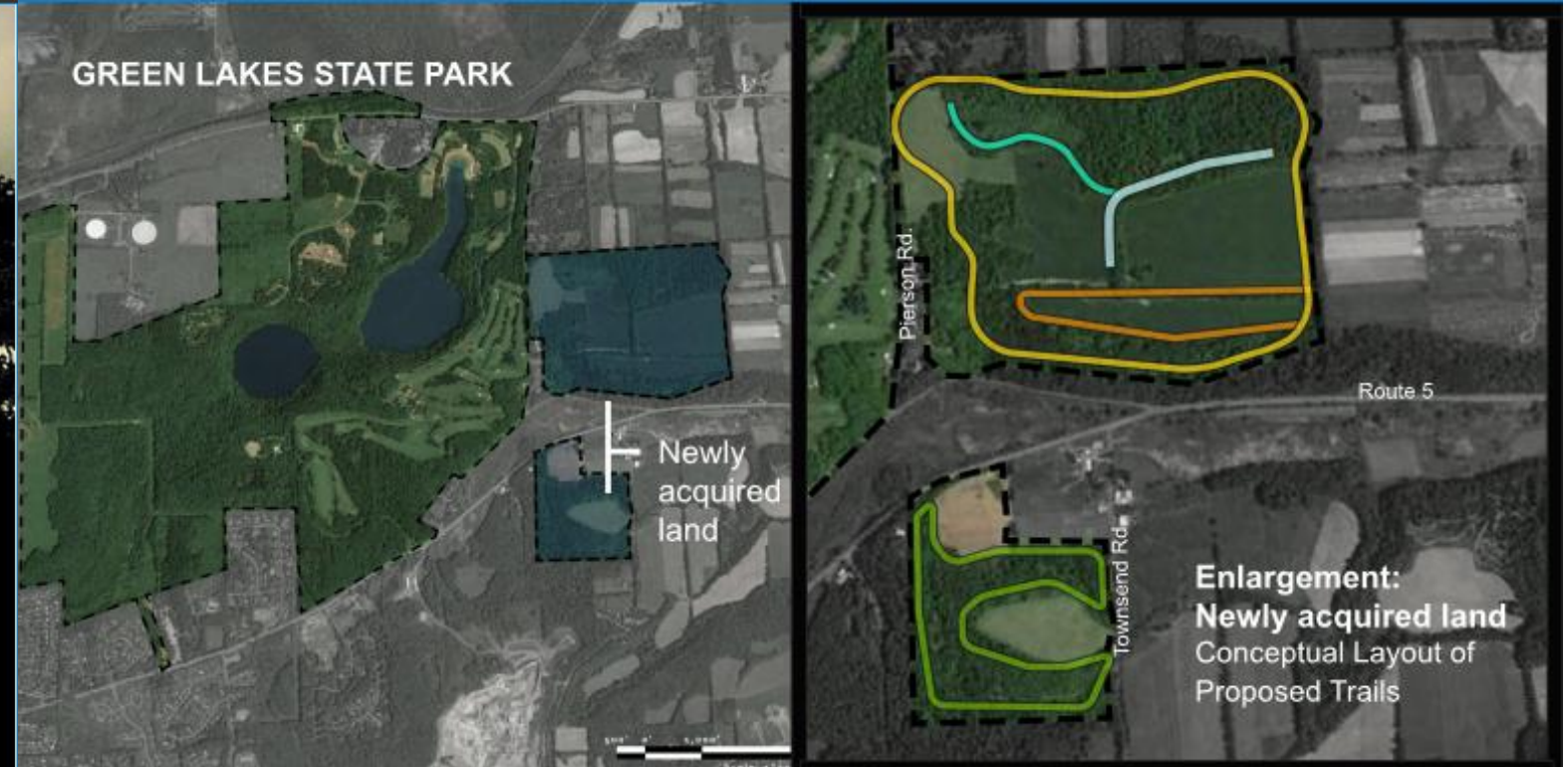
Sign our petition to support new mountain bike trails at Green Lakes.

www.gopetition.com and enter in the search box "Green Lakes Singletrack Trail Plan for Newly Acquired Land"

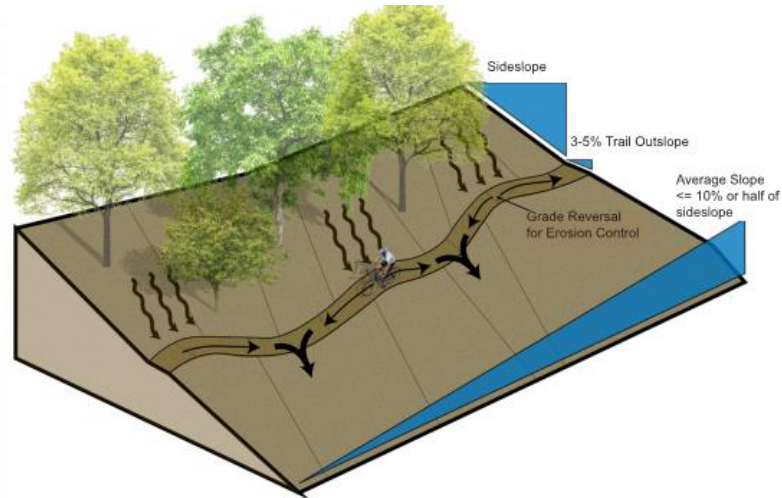
GLAMP

Sponsored by Onondaga Cycling Club

GREEN LAKES STATE PARK



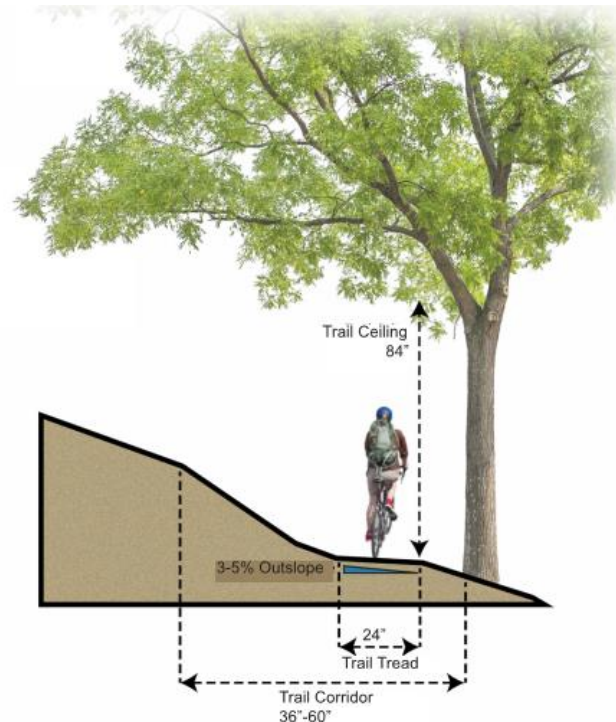
Enlargement:
Newly acquired land
Conceptual Layout of
Proposed Trails



Sustainable Trail Design Criterial Guidelines:

- Adequate use of grade reversals
- Half Slope Rule
- 3% - 5% trail outslope as needed
- 10% average grade
- Max Trail Slope: 15 -20%

*guidelines to be applied as required based on topography and soil conditions.



The proposed singletrack trails will be constructed with low impact, sustainable trail construction methods for managing water flow and erosion. The minimalistic trail requirements typical of singletrack trails further reduce the overall environmental impact of the proposed trails. The critical design criteria for the proposed trails are detailed in this document. This criteria is consistent with the design guidelines developed by the NYSDEC for mountain bike trails within the Adirondack Park. The proposed trail system will be constructed to largely be consistent with a "Blue Square" difficulty rating. Some deviations from this difficulty rating may occur based on terrain.

Trail Difficulty Rating System

	Easiest White Circle	Easy Green Circle	More Difficult Blue Square	Very Difficult Black Diamond	Extremely Difficult Double Black Diamond
Trail Width	72" or more	36" or more	24" or more	12" or more	6" or more
Tread Surface	Hardened or surfaced	Firm and stable	Mostly stable with some variability	Widely variable	Widely variable and unpredictable
Average Trail Grade	Less than 5%	5% or less	10% or less	15% or less	20% or more
Maximum Trail Grade	10%	15%	15% or greater	15% or greater	15% or greater
Natural Obstacles and Technical Trail Features	None	Unavoidable obstacles 2" tall or less Avoidable obstacles may be present	Unavoidable obstacles 8" tall or less Avoidable obstacles may be present	Unavoidable obstacles 12" tall or less Avoidable obstacles may be present May include loose rocks	Unavoidable obstacles 15" tall or less Avoidable obstacles may be present May include loose rocks
		Unavoidable bridges 30" or wider	Unavoidable bridges 24" or wider TTP's 2' high or less, width of deck is greater than 1/2 the height	Unavoidable bridges 24" or wider TTP's 4' high or less, width of deck is greater than 1/2 the height	Unavoidable bridges 24" or wider TTP's 4' high or less, width of deck is unpredictable Many sections may exceed criteria